



Wylfa Newydd Project

6.7.41 ES Volume G - A5025 Off-line

Highway Improvements App G10-9 - A5025

Landscape scheme

PINS Reference Number: EN010007

Application Reference Number: 6.7.41

June 2018

Revision 1.0

Regulation Number: 5(2)(a)

Planning Act 2008

Infrastructure Planning (Applications: Prescribed Forms and Procedure) Regulations 2009

[This page is intentionally blank]

List of Figures

- Figure 1 A5025 Off-line Highway Improvements landscape scheme section 1 Valley
- Figure 2 A5025 Off-line Highway Improvements landscape scheme section 3
Llanfachraeth sheet 1
- Figure 3 A5025 Off-line Highway Improvements landscape scheme section 3
Llanfachraeth sheet 2
- Figure 4 A5025 Off-line Highway Improvements landscape scheme section 3
Llanfachraeth sheet 3
- Figure 5 A5025 Off-line Highway Improvements landscape scheme section 3
Llanfachraeth sheet 4
- Figure 6 A5025 Off-line Highway Improvements landscape scheme section 5
Llanfaethlu sheet 1
- Figure 7 A5025 Off-line Highway Improvements landscape scheme section 5
Llanfaethlu sheet 2
- Figure 8 A5025 Off-line Highway Improvements landscape scheme section 7 Cefn
Coch sheet 1
- Figure 9 A5025 Off-line Highway Improvements landscape scheme section 7 Cefn
Coch sheet 2
- Figure 10 A5025 Off-line Highway Improvements landscape scheme Power Station
Access Road Junction

[This page is intentionally blank]

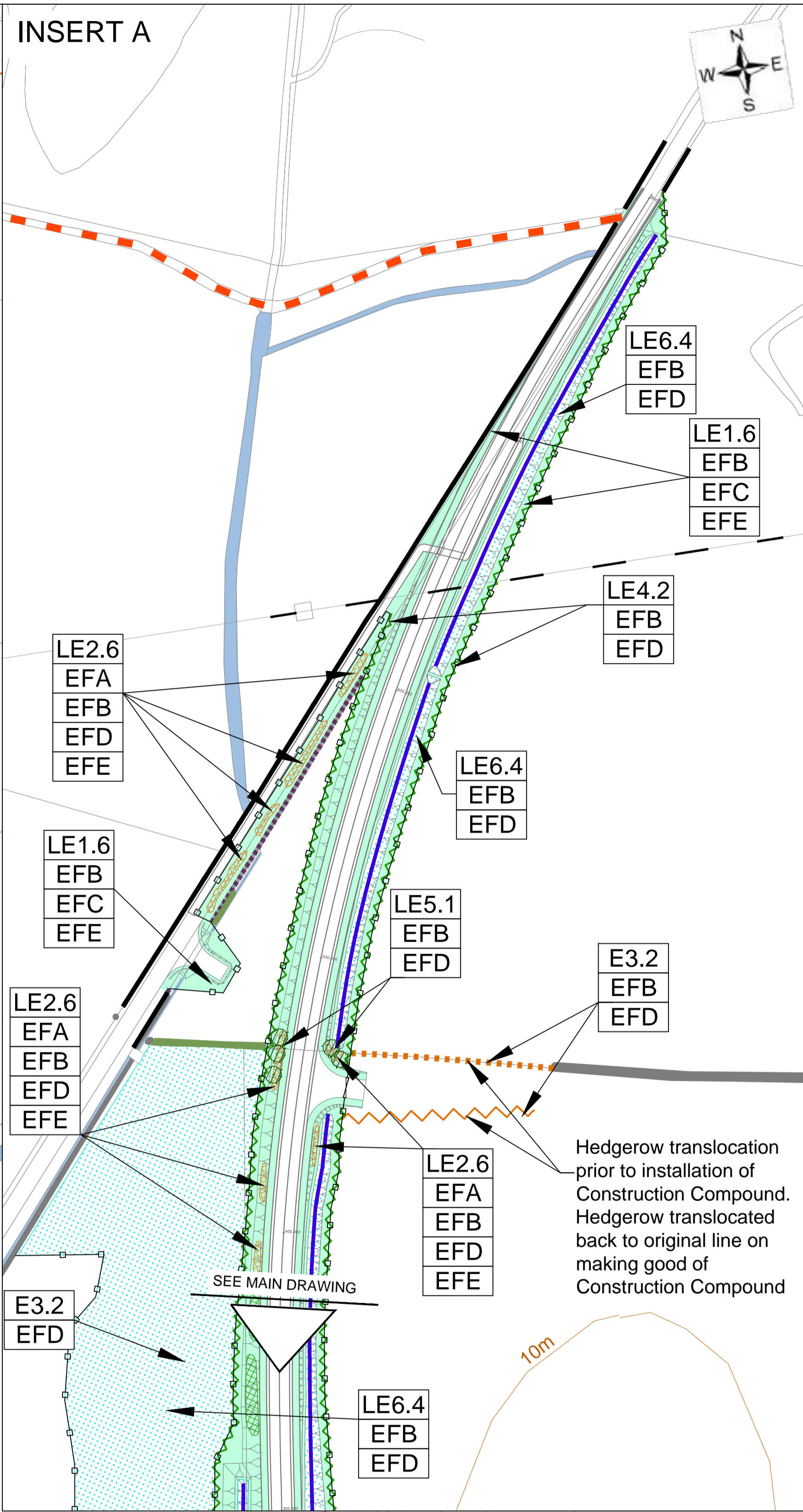
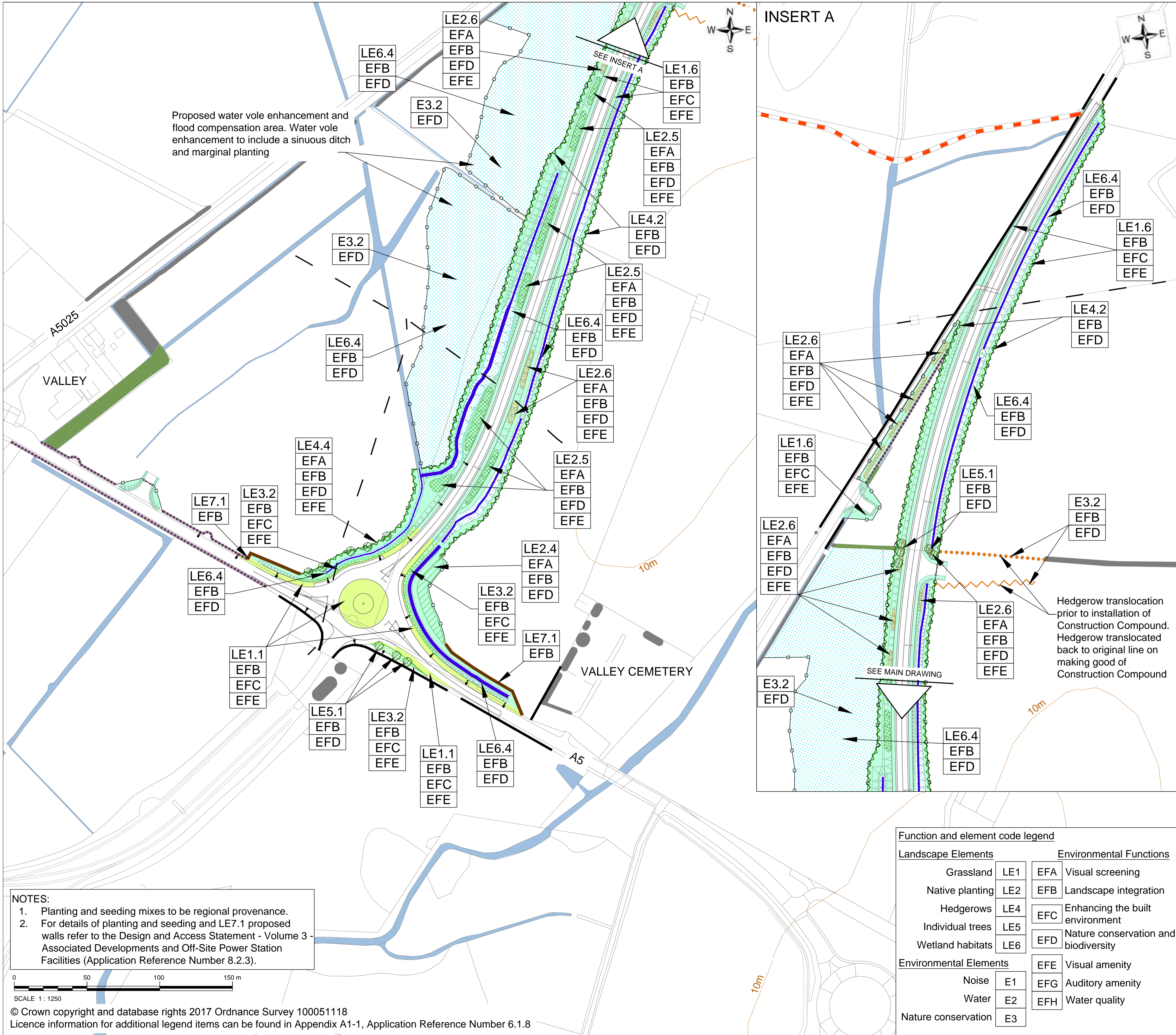


FIGURE 1

Legend

- 10m contours
- Existing vegetation
- Existing vegetation to be retained
- Existing surface waters
- Existing wall
- Existing wall to be retained
- Existing overhead line
- Public Right of Way
- LE1.1 Amenity grassland
- LE1.6 Open grassland
- LE2.4 Linear belt of native trees and shrubs
- LE2.5 Native shrubs with intermittent trees
- LE2.6 Native shrubs
- LE3.2 Ornamental shrubs
- LE4.2 Native hedgerow
- LE4.4 Native hedgerow with trees
- E3.2 Existing hedgerow marked for translocation
- E3.2 Temporary location for translocated hedgerow
- LE5.1 Individual trees
- LE6.4 Marshy grassland
- LE7.1 Proposed wall
- Proposed fence
- Proposed ditch
- Proposed 10m high lighting column

Function and element code legend

Landscape Elements		Environmental Functions	
Grassland	LE1	EFA	Visual screening
Native planting	LE2	EFB	Landscape integration
Hedgerows	LE4	EFC	Enhancing the built environment
Individual trees	LE5	EFD	Nature conservation and biodiversity
Wetland habitats	LE6		
Environmental Elements		Environmental Functions	
Noise	E1	EFE	Visual amenity
Water	E2	EFG	Auditory amenity
Nature conservation	E3	EFH	Water quality

NOTES:

- Planting and seeding mixes to be regional provenance.
- For details of planting and seeding and LE7.1 proposed walls refer to the Design and Access Statement - Volume 3 - Associated Developments and Off-Site Power Station Facilities (Application Reference Number 8.2.3).

1.0	MAR 18	DCO submission	HNPWL	HNPWL	HNPWL	HNPWL
Rev.	Date	Purpose of Revision	Drawn	Check'd	Rev'd	App'd
Client						
Project						
WYLF A NEWYDD PROJECT ENVIRONMENTAL STATEMENT						
Drawing Title						
A5025 OFF-LINE HIGHWAY IMPROVEMENTS LANDSCAPE SCHEME SECTION 1 VALLEY						
Scale	1:1,250 @ A1					DO NOT SCALE
Jacobs No.	60PO8061					
Client No.						
Drawing No.	Jacobs Ref.	60PO8061_LVE_DMD_003				
	DCRM Ref.	WN034-JAC-PAC-DRG-00011				
This drawing is not to be used in whole or in part other than for the intended purpose and project as defined on this drawing. Refer to the contract for full terms and conditions						

Function and element code legend

Landscape Elements		Environmental Functions	
Grassland	LE1	EFA	Visual screening
Native planting	LE2	EFB	Landscape integration
Hedgerows	LE4	EFC	Enhancing the built environment
Individual trees	LE5	EFD	Nature conservation and biodiversity
Wetland habitats	LE6		
Environmental Elements		EFE	Visual amenity
Noise	E1	EFG	Auditory amenity
Water	E2	EFH	Water quality
Nature conservation	E3		

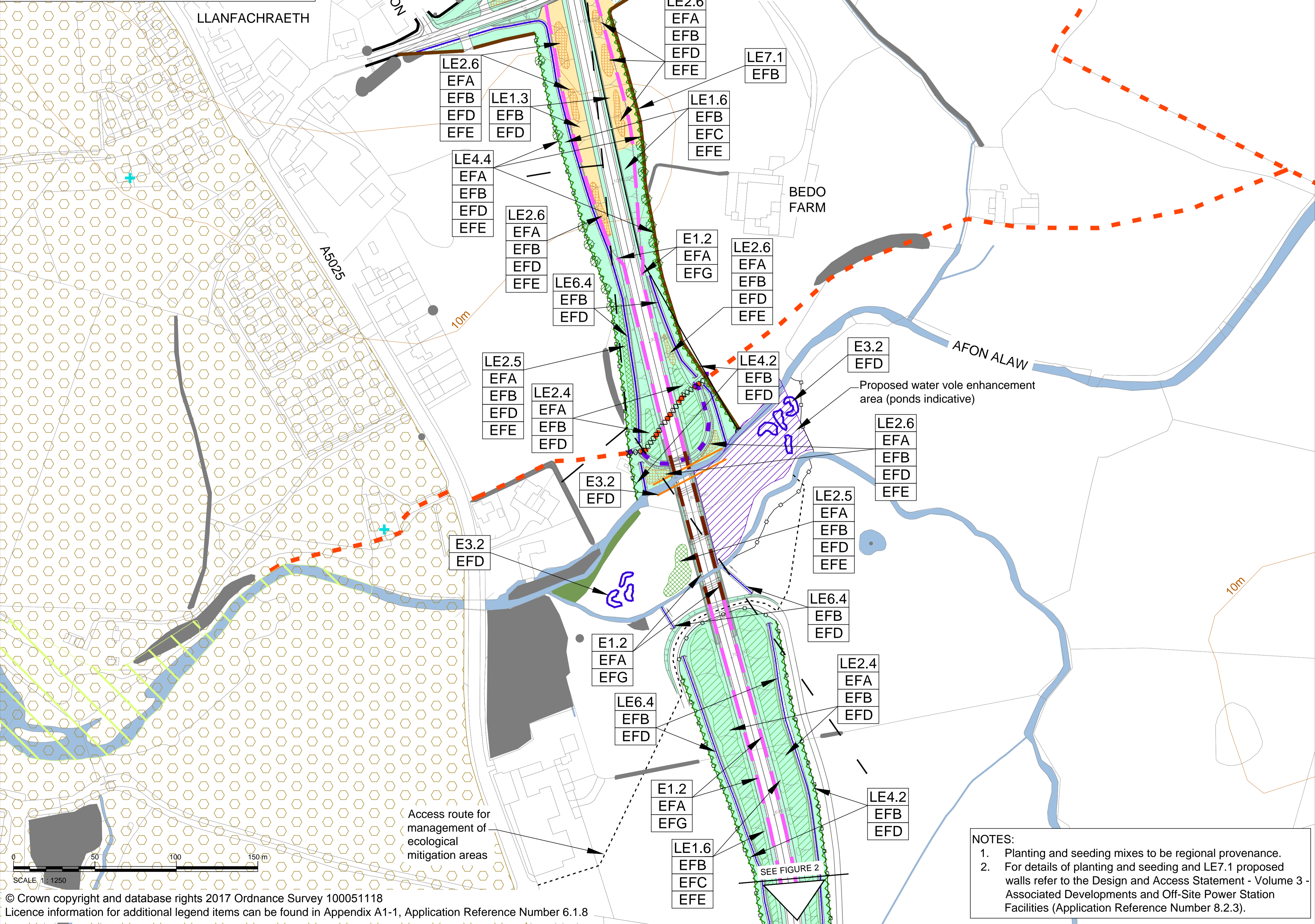
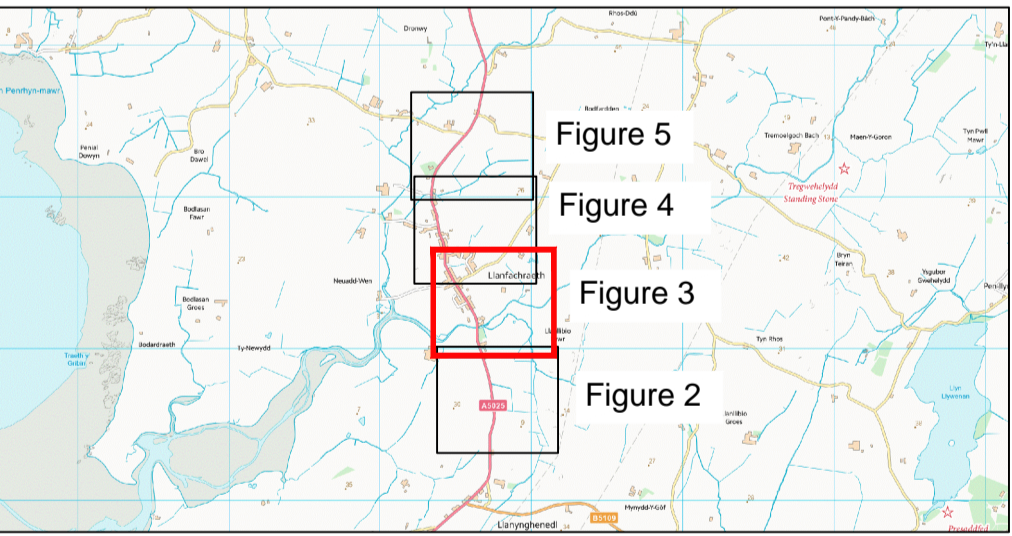


FIGURE 3

Legend	
	10m contours
	Existing vegetation
	Existing vegetation to be retained
	Existing surface waters
	Existing wall
	Existing overhead line
	Area of Outstanding Natural Beauty (AONB)
	Listed Building
	Site of Special Scientific Interest
	Public Right of Way (PRoW)
	PRoW to be stopped up
	PRoW diversion
	LE1.3 Species-rich grassland
	LE1.6 Open grassland
	LE2.4 Linear belt of native trees and shrubs
	LE2.5 Native shrubs with intermittent trees
	LE2.6 Native shrubs
	LE4.2 Native hedgerow
	LE5.1 Individual trees
	LE7.1 Proposed wall
	E1.2 Noise barrier (2m high)
	E3.2 Proposed ecology underpass
	Flooding mitigation works area (proposals to be agreed with Natural Resources Wales)
	LE4.4 Native hedgerow with trees
	LE6.4 Marshy grassland
	Proposed fence
	Proposed ditch
	E1.2 Noise barrier (1m high)
	E3.2 Proposed water vole pond



1.0	MAR 18	DCO submission	HNPWL	HNPWL	HNPWL	HNPWL
Rev.	Date	Purpose of Revision	Drawn	Check'd	Rev'd	App'd
Client						
<div><div>HORIZON</div><div>NUCLEAR POWER</div></div>						
Project						
WYLFA NEWYDD PROJECT ENVIRONMENTAL STATEMENT						
Drawing Title						
A5025 OFF-LINE HIGHWAY IMPROVEMENTS LANDSCAPE SCHEME SECTION 3 LLANFACHRAETH SHEET 2						
Scale	1:1,250 @ A1					DO NOT SCALE
Jacobs No.	60PO8061					
Client No.						
Drawing No.	Jacobs Ref.	60PO8061_LVE_DMD_005				
	DCRM Ref.	WN034-JAC-PAC-DRG-00013				
This drawing is not to be used in whole or in part other than for the intended purpose and project as defined on this drawing. Refer to the contract for full terms and conditions						

NOTES:

- Planting and seeding mixes to be regional provenance.
- For details of planting and seeding and LE7.1 proposed walls refer to the Design and Access Statement - Volume 3 - Associated Developments and Off-Site Power Station Facilities (Application Reference Number 8.2.3).

Function and element code legend

Landscape Elements		Environmental Functions	
Grassland	LE1	EFA	Visual screening
Native planting	LE2	EFB	Landscape integration
Hedgerows	LE4	EFC	Enhancing the built environment
Individual trees	LE5	EFD	Nature conservation and biodiversity
Wetland habitats	LE6		
Environmental Elements		EFE	Visual amenity
Noise	E1	EFG	Auditory amenity
Water	E2	EFH	Water quality
Nature conservation	E3		

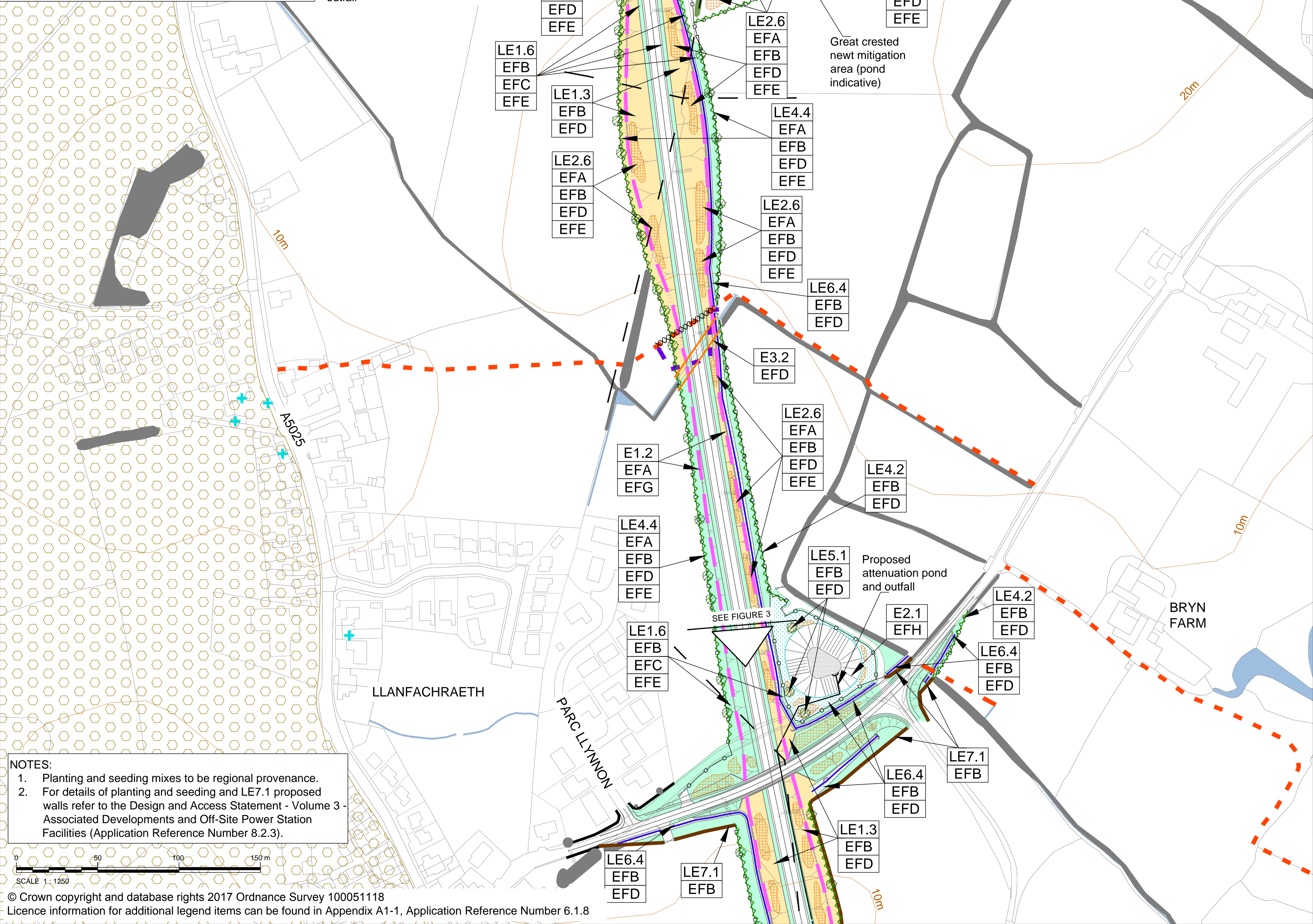
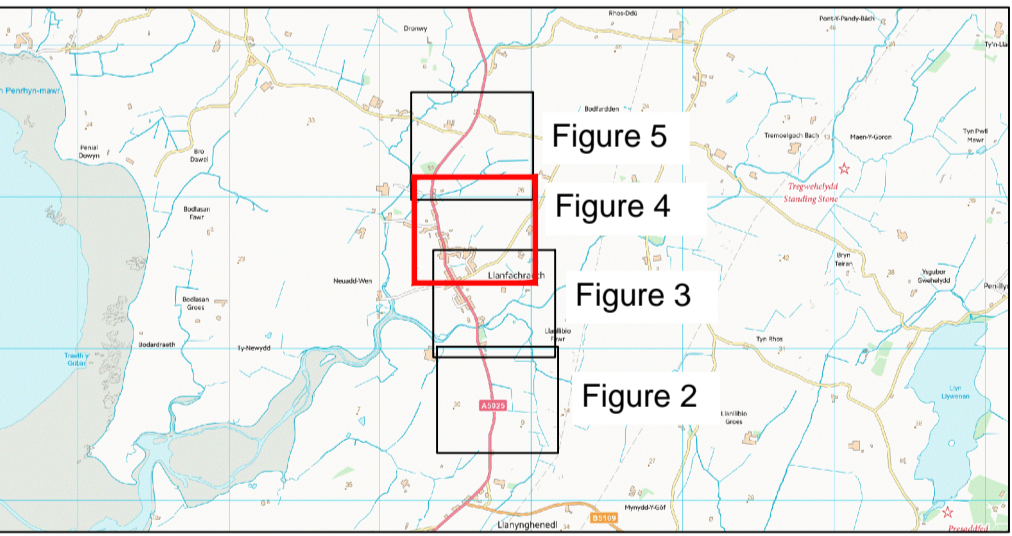


FIGURE 4

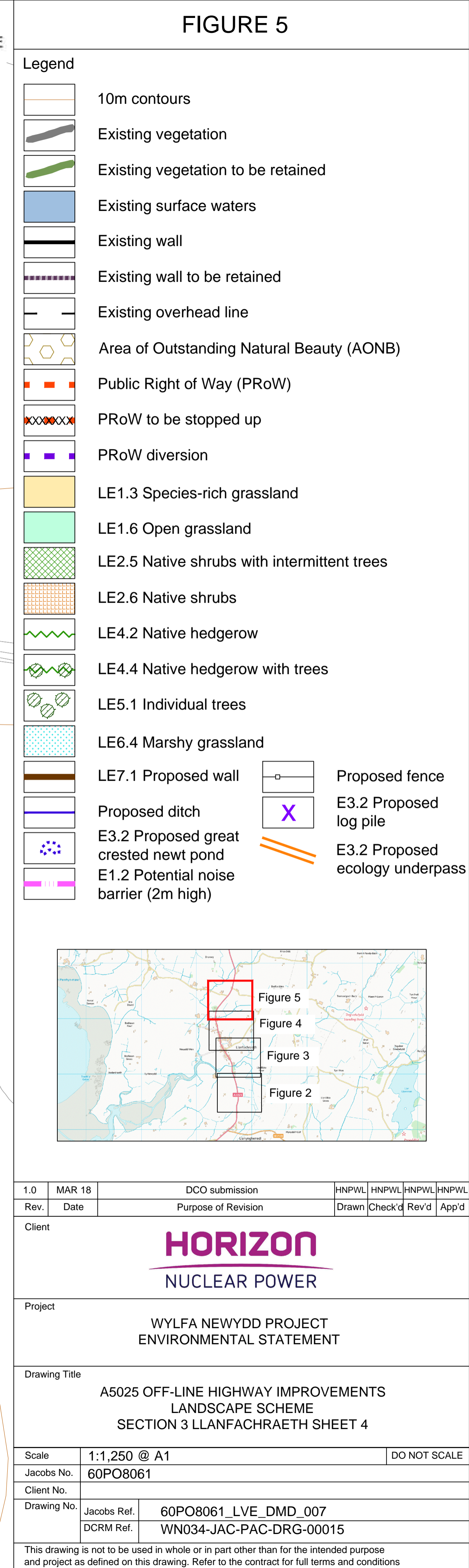
Legend	
	10m contours
	Existing vegetation
	Existing vegetation to be retained
	Existing surface waters
	Existing wall
	Existing overhead line
	Area of Outstanding Natural Beauty (AONB)
	Listed Building
	Public Right of Way (PRoW)
	PRoW to be stopped up
	PRoW diversion
	LE1.3 Species-rich grassland
	LE1.6 Open grassland
	LE2.5 Native shrubs with intermittent trees
	LE2.6 Native shrubs
	LE4.4 Native hedgerow with trees
	LE7.1 Proposed wall
	E1.2 Potential noise barrier (2m high)
	Proposed fence
	E3.2 Proposed ecology underpass
	LE4.2 Native hedgerow
	LE6.4 Marshy grassland
	Proposed fence
	E3.2 Proposed log pile
	Proposed ditch
	E3.2 Proposed great crested newt pond



1.0	MAR 18	DCO submission	HNPWL	HNPWL	HNPWL	HNPWL
Rev.	Date	Purpose of Revision	Drawn	Check'd	Rev'd	App'd
Client						
<div><div>HORIZON</div><div>NUCLEAR POWER</div></div>						
Project						
WYLFA NEWYDD PROJECT ENVIRONMENTAL STATEMENT						
Drawing Title						
A5025 OFF-LINE HIGHWAY IMPROVEMENTS LANDSCAPE SCHEME SECTION 3 LLANFACHRAETH SHEET 3						
Scale	1:1,250 @ A1					DO NOT SCALE
Jacobs No.	60PO8061					
Client No.						
Drawing No.	Jacobs Ref.	60PO8061_LVE_DMD_006				
	DCRM Ref.	WN034-JAC-PAC-DRG-00014				
This drawing is not to be used in whole or in part other than for the intended purpose and project as defined on this drawing. Refer to the contract for full terms and conditions						

1. Planting and seeding mixes to be regional provenance.
2. For details of planting and seeding and LE7.1 proposed walls refer to the Design and Access Statement - Volume 3 - Associated Developments and Off-Site Power Station Facilities (Application Reference Number 8.2.3).

Landscape Elements		Environmental Functions	
Grassland	LE1	EFA	Visual screening
Native planting	LE2	EFB	Landscape integration
Hedgerows	LE4	EF C	Enhancing the built environment
Individual trees	LE5	EF D	Nature conservation and biodiversity
Wetland habitats	LE6	EF E	Visual amenity
Environmental Elements		EF G	Auditory amenity
Noise	E1	EF H	Water quality
Water	E2	E3	Nature conservation



© Crown copyright and database rights 2017 Ordnance
Survey 100051118
Licence information for additional legend items can be
found in Appendix A1-1, Application Reference Number
6.1.8

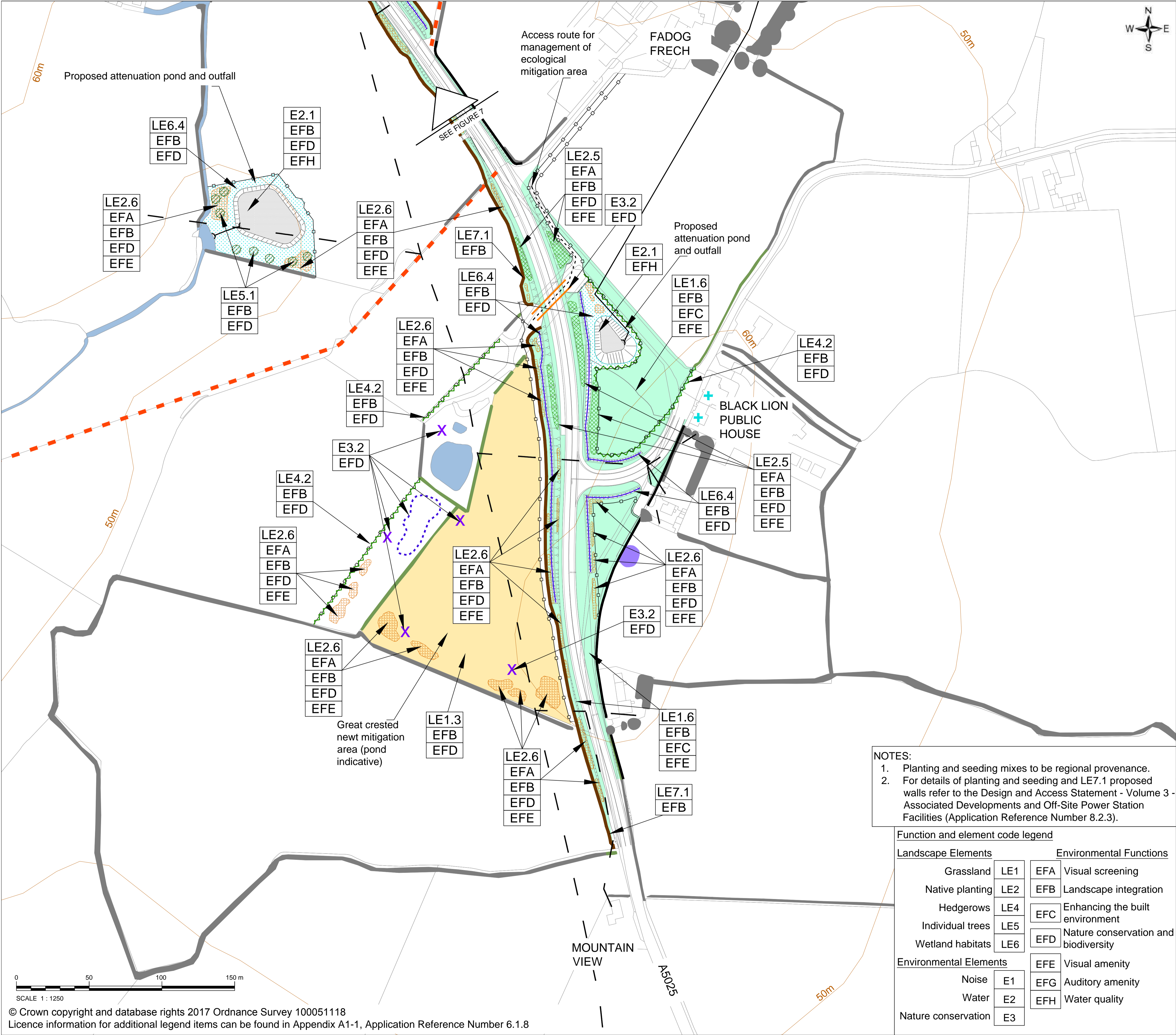


FIGURE 6

Legend

10m contours

Existing vegetation

Existing vegetation to be retained

Existing surface waters

Existing wall

Existing overhead line

Listed Building

Scheduled Monument

Public Right of Way

LE1.3 Species-rich grassland

LE1.6 Open grassland

LE2.5 Native shrubs with intermittent trees

LE2.6 Native shrubs

LE4.2 Native hedgerow

LE5.1 Individual trees

LE6.4 Marshy grassland

LE7.1 Proposed wall

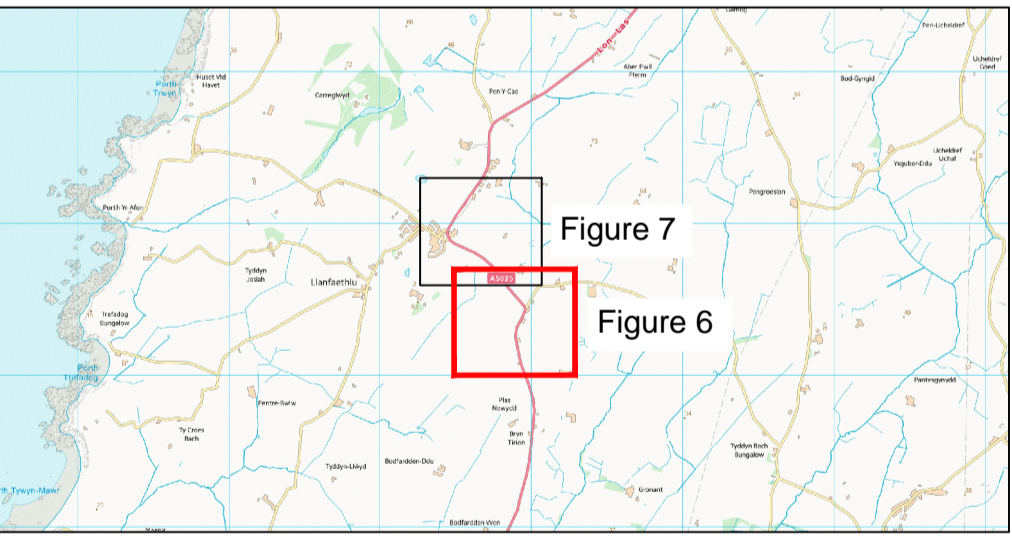
Proposed fence

Proposed ditch

E3.2 Proposed great crested newt pond

E3.2 Proposed log pile

E3.2 Proposed ecology underpass

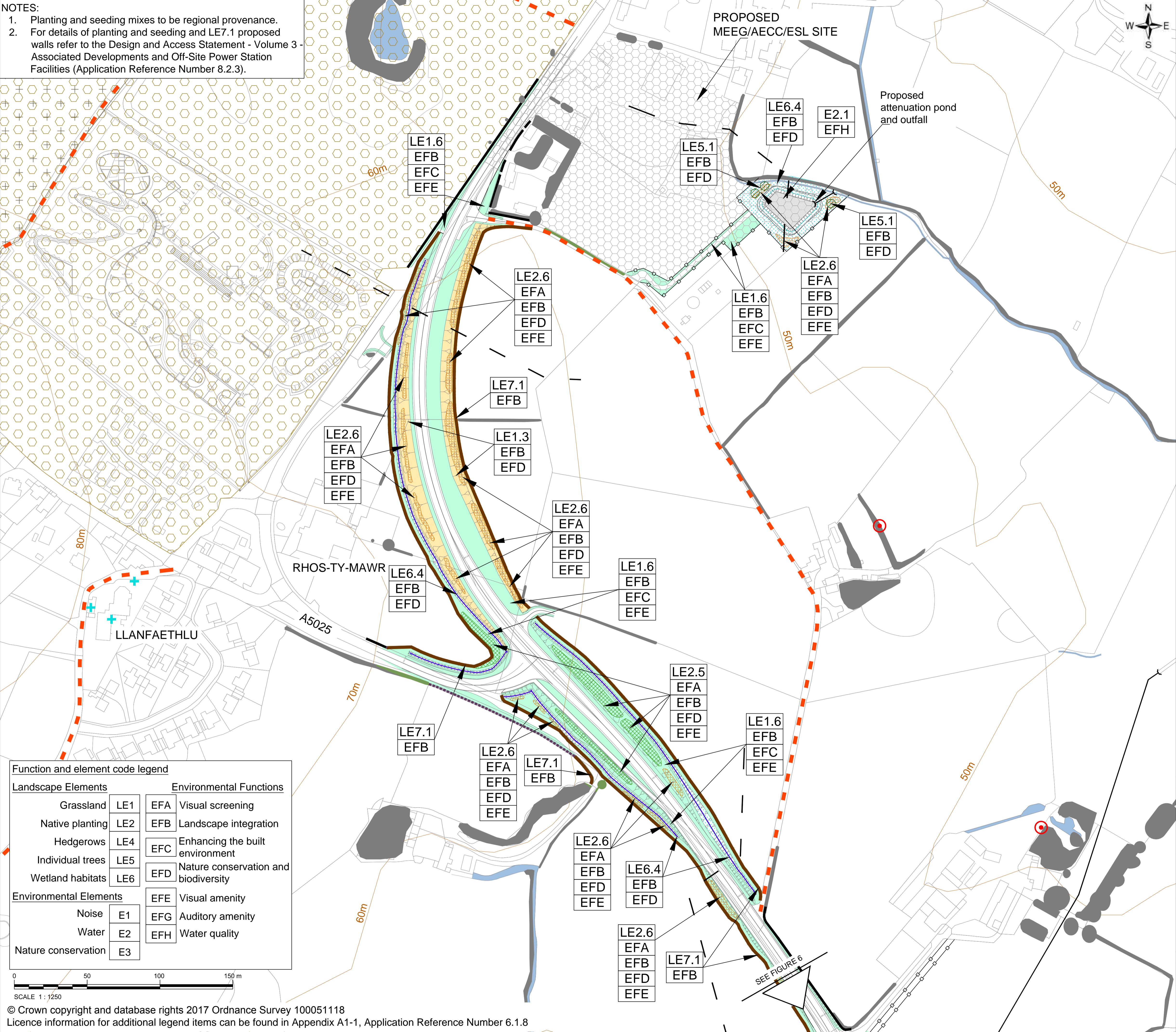


- NOTES:
- Planting and seeding mixes to be regional provenance.
 - For details of planting and seeding and LE7.1 proposed walls refer to the Design and Access Statement - Volume 3 - Associated Developments and Off-Site Power Station Facilities (Application Reference Number 8.2.3).

Function and element code legend				
Landscape Elements		Environmental Functions		
Grassland	LE1	EFA	Visual screening	
Native planting	LE2	EFB	Landscape integration	
Hedgerows	LE4	EFC	Enhancing the built environment	
Individual trees	LE5	EFD	Nature conservation and biodiversity	
Wetland habitats	LE6			
Environmental Elements		EFE	Visual amenity	
Noise	E1	EFG	Auditory amenity	
Water	E2	EFH	Water quality	
Nature conservation	E3			

1.0	MAR 18	DCO submission	HNPWL	HNPWL	HNPWL	HNPWL
Rev.	Date	Purpose of Revision	Drawn	Check'd	Rev'd	App'd
Client						
<div><div>HORIZON</div><div>NUCLEAR POWER</div></div>						
Project						
WYLFA NEWYDD PROJECT ENVIRONMENTAL STATEMENT						
Drawing Title						
A5025 OFF-LINE HIGHWAY IMPROVEMENTS LANDSCAPE SCHEME SECTION 5 LLANFAETHLU SHEET 1						
Scale	1:1,250 @ A1					DO NOT SCALE
Jacobs No.	60PO8061					
Client No.						
Drawing No.	Jacobs Ref.	60PO8061_LVE_DMD_008				
	DCRM Ref.	WN034-JAC-PAC-DRG-00016				
This drawing is not to be used in whole or in part other than for the intended purpose and project as defined on this drawing. Refer to the contract for full terms and conditions						

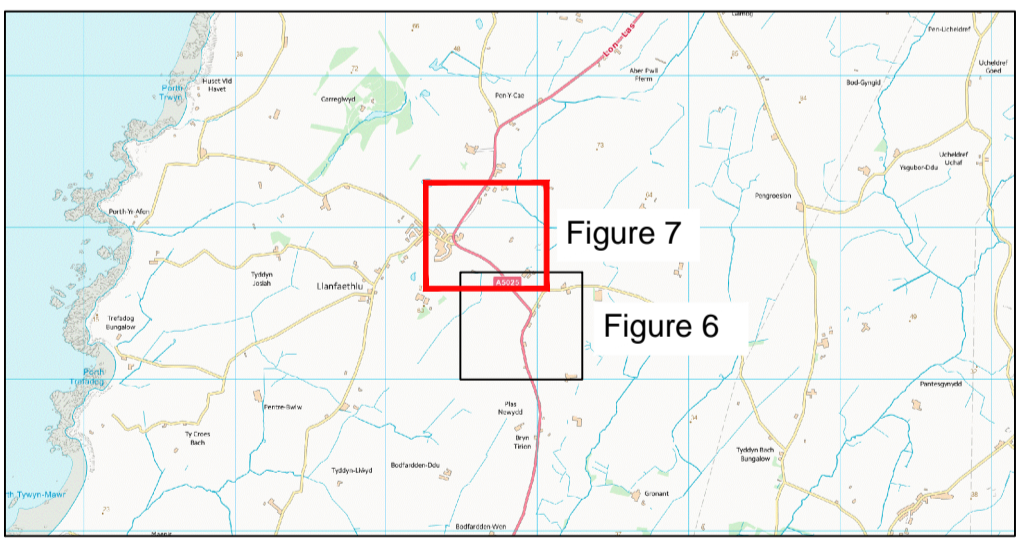
NOTES:
1. Planting and seeding mixes to be regional provenance.
2. For details of planting and seeding and LE7.1 proposed walls refer to the Design and Access Statement - Volume 3 - Associated Developments and Off-Site Power Station Facilities (Application Reference Number 8.2.3).



Function and element code legend				
Landscape Elements		Environmental Functions		
Grassland	LE1	EFA	Visual screening	
Native planting	LE2	EFB	Landscape integration	
Hedgerows	LE4	EFC	Enhancing the built environment	
Individual trees	LE5	EFD	Nature conservation and biodiversity	
Wetland habitats	LE6	EFE		
Environmental Elements		EFE	Visual amenity	
Noise	E1	EFG	Auditory amenity	
Water	E2	EFH	Water quality	
Nature conservation	E3			

FIGURE 7

- Legend
- 10m contours
 - Existing vegetation
 - Existing vegetation to be retained
 - Existing surface waters
 - Existing wall
 - Existing wall to be retained
 - Existing overhead line
 - Area of Outstanding Natural Beauty (AONB)
 - Registered Park and Garden Essential Setting
 - Listed Building
 - Bat roost
 - Public Right of Way
 - Proposed MEEG/AECC/ESL site
 - LE1.3 Species-rich grassland
 - LE1.6 Open grassland
 - LE2.5 Native shrubs with intermittent trees
 - LE2.6 Native shrubs
 - LE5.1 Individual trees
 - LE6.4 Marshy grassland
 - LE7.1 Proposed wall
 - Proposed fence
 - Proposed ditch



1.0	MAR 18	DCO submission	HNPWL	HNPWL	HNPWL	HNPWL
Rev.	Date	Purpose of Revision	Drawn	Check'd	Rev'd	App'd
Client						
<div><div>HORIZON</div><div>NUCLEAR POWER</div></div>						
Project						
WYLFA NEWYDD PROJECT ENVIRONMENTAL STATEMENT						
Drawing Title						
A5025 OFF-LINE HIGHWAY IMPROVEMENTS LANDSCAPE SCHEME SECTION 5 LLANFAETHLU SHEET 2						
Scale	1:1,250 @ A1					DO NOT SCALE
Jacobs No.	60PO8061					
Client No.						
Drawing No.	Jacobs Ref.	60PO8061_LVE_DMD_009				
	DCRM Ref.	WN034-JAC-PAC-DRG-00017				
This drawing is not to be used in whole or in part other than for the intended purpose and project as defined on this drawing. Refer to the contract for full terms and conditions						

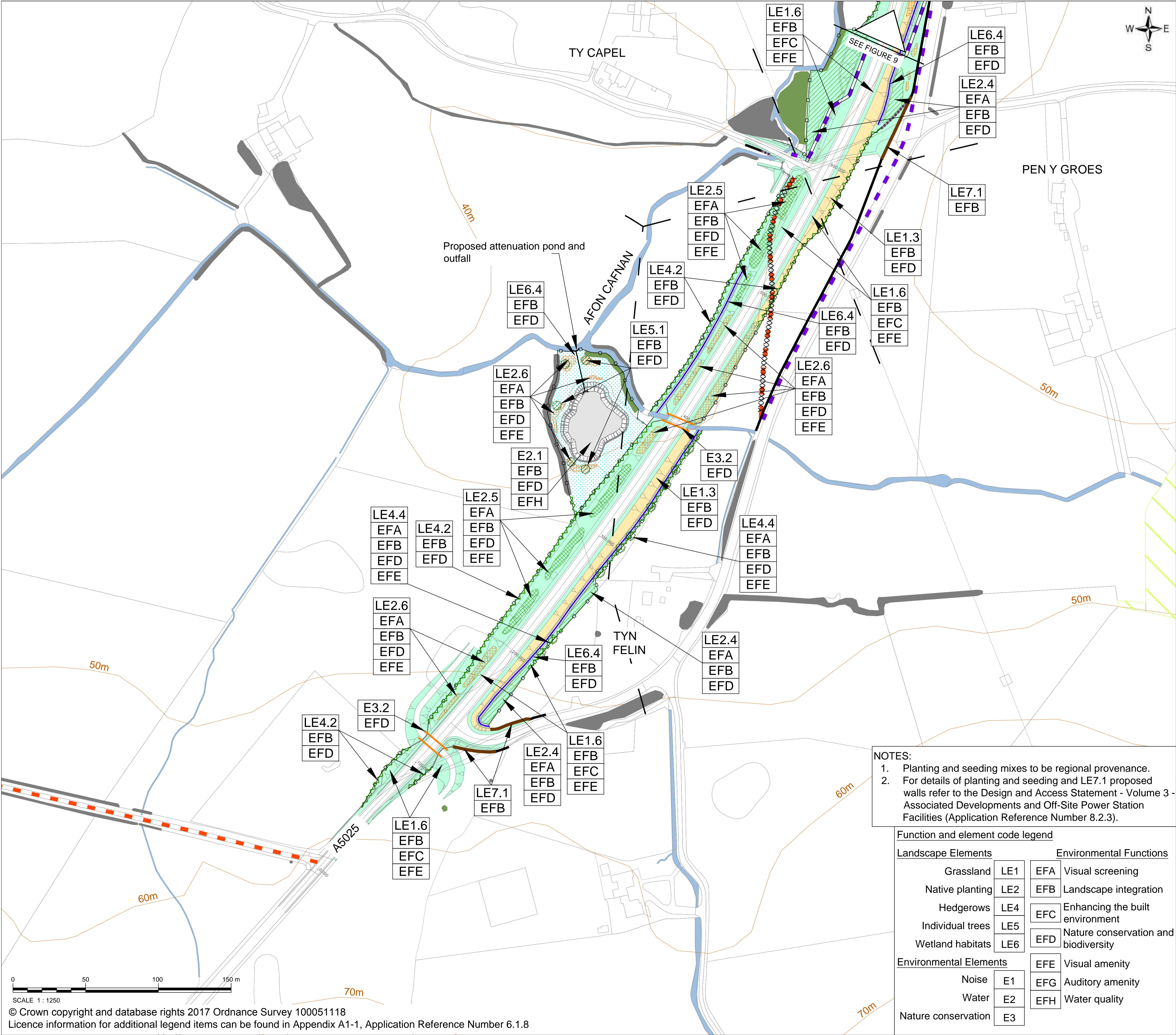
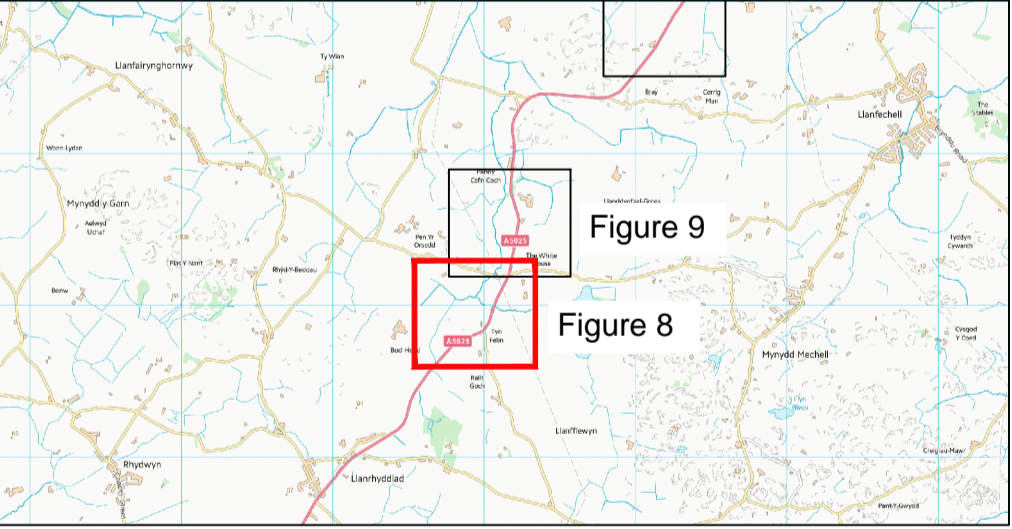


FIGURE 8

- Legend
- 10m contours
 - Existing vegetation
 - Existing vegetation to be retained
 - Existing surface waters
 - Existing wall
 - Existing wall to be retained
 - Existing overhead line
 - Site of Special Scientific Interest
 - Public Right of Way (PRoW)
 - PRoW to be stopped up
 - PRoW diversion
 - LE1.3 Species-rich grassland
 - LE1.6 Open grassland
 - LE2.4 Linear belt of native trees and shrubs
 - LE2.5 Native shrubs with intermittent trees
 - LE2.6 Native shrubs
 - LE4.2 Native hedgerow
 - LE4.4 Native hedgerow with trees
 - LE5.1 Individual trees
 - LE6.4 Marshy grassland
 - LE7.1 Proposed wall
 - Proposed fence
 - Proposed ditch
 - E3.2 Proposed ecology underpass



- NOTES:
- Planting and seeding mixes to be regional provenance.
 - For details of planting and seeding and LE7.1 proposed walls refer to the Design and Access Statement - Volume 3 - Associated Developments and Off-Site Power Station Facilities (Application Reference Number 8.2.3).

Function and element code legend				
Landscape Elements		Environmental Functions		
Grassland	LE1	EFA	Visual screening	
Native planting	LE2	EFB	Landscape integration	
Hedgerows	LE4	EFC	Enhancing the built environment	
Individual trees	LE5	EFD	Nature conservation and biodiversity	
Wetland habitats	LE6			
Environmental Elements		EFE	Visual amenity	
Noise	E1	EFG	Auditory amenity	
Water	E2	EFH	Water quality	
Nature conservation	E3			

1.0	MAR 18	DCO submission	HNPWL	HNPWL	HNPWL	HNPWL
Rev.	Date	Purpose of Revision	Drawn	Check'd	Rev'd	App'd
Client						
<div><div>HORIZON</div><div>NUCLEAR POWER</div></div>						
Project						
WYLFA NEWYDD PROJECT ENVIRONMENTAL STATEMENT						
Drawing Title						
A5025 OFF-LINE HIGHWAY IMPROVEMENTS LANDSCAPE SCHEME SECTION 7 CEFN COCH SHEET 1						
Scale	1:1,250 @ A1					DO NOT SCALE
Jacobs No.	60PO8061					
Client No.						
Drawing No.	Jacobs Ref.	60PO8061_LVE_DMD_010				
	DCRM Ref.	WN034-JAC-PAC-DRG-00018				
This drawing is not to be used in whole or in part other than for the intended purpose and project as defined on this drawing. Refer to the contract for full terms and conditions						

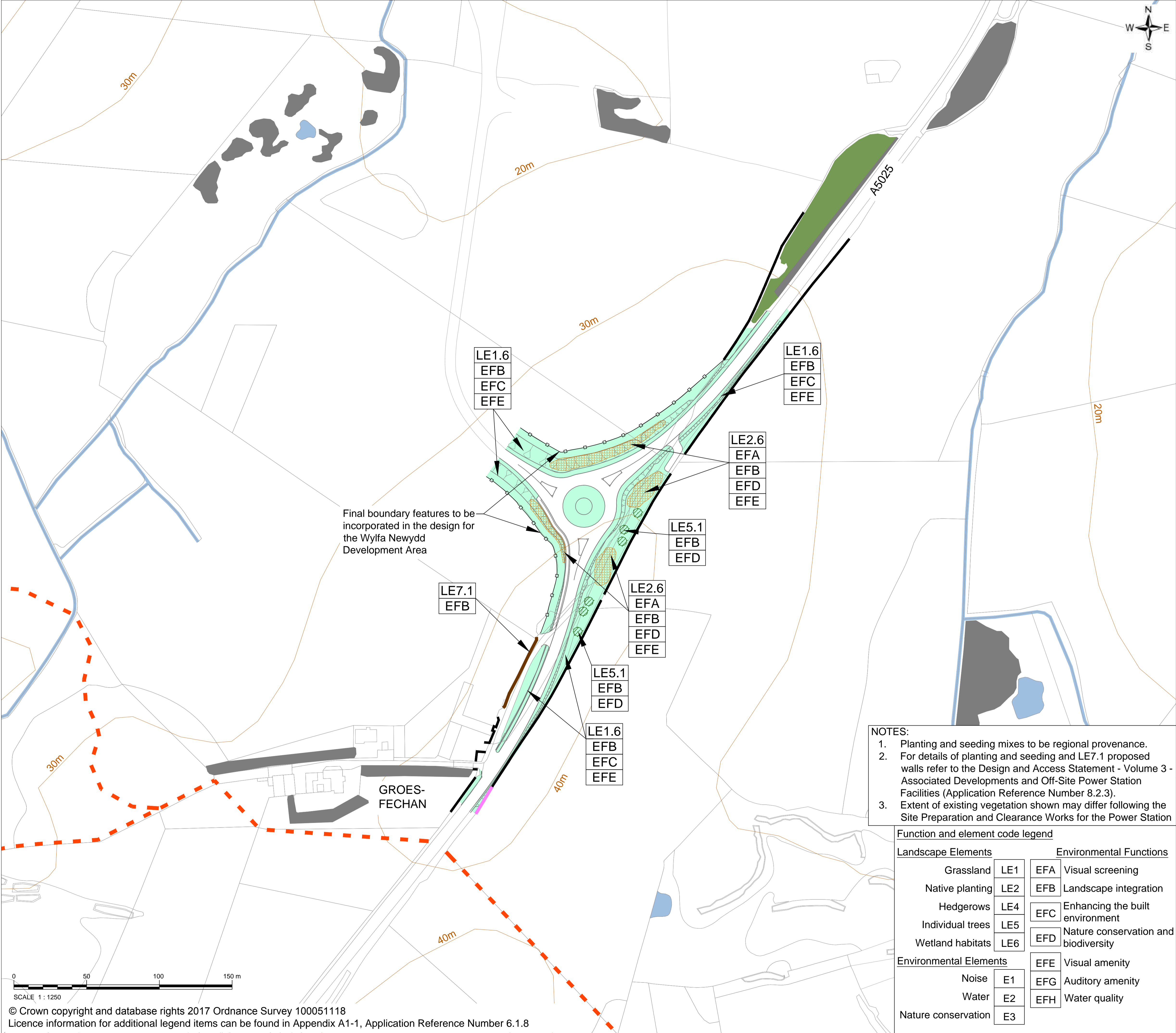


FIGURE 10

Legend

10m contours

Existing vegetation

Existing vegetation to be retained

Existing surface waters

Existing wall

Existing clawdd

Public Right of Way

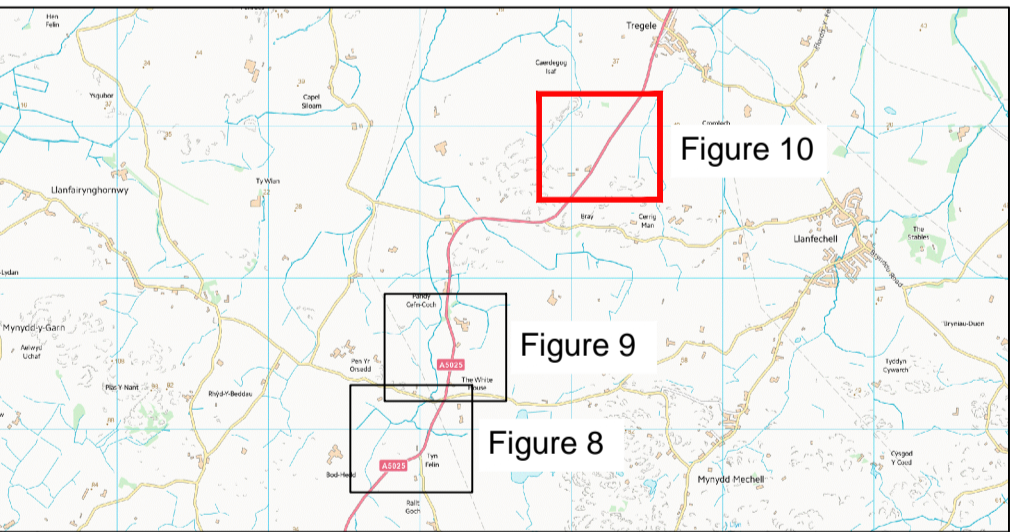
LE1.6 Open grassland

LE2.6 Native shrubs

LE5.1 Individual trees

LE7.1 Proposed wall

Proposed fence



- NOTES:
1. Planting and seeding mixes to be regional provenance.
 2. For details of planting and seeding and LE7.1 proposed walls refer to the Design and Access Statement - Volume 3 - Associated Developments and Off-Site Power Station Facilities (Application Reference Number 8.2.3).
 3. Extent of existing vegetation shown may differ following the Site Preparation and Clearance Works for the Power Station

Function and element code legend					
Landscape Elements			Environmental Functions		
Grassland	LE1	EFA	Visual screening		
Native planting	LE2	EFB	Landscape integration		
Hedgerows	LE4	EFC	Enhancing the built environment		
Individual trees	LE5	EFD	Nature conservation and biodiversity		
Wetland habitats	LE6				
Environmental Elements					
Noise	E1	EFE	Visual amenity		
Water	E2	EFG	Auditory amenity		
Nature conservation	E3	EFH	Water quality		

1.0	MAR 18	DCO submission	HNPWL	HNPWL	HNPWL	HNPWL
Rev.	Date	Purpose of Revision	Drawn	Check'd	Rev'd	App'd
Client						
<div><div>HORIZON</div><div>NUCLEAR POWER</div></div>						
Project						
WYLFA NEWYDD PROJECT ENVIRONMENTAL STATEMENT						
Drawing Title						
A5025 OFF-LINE HIGHWAY IMPROVEMENTS LANDSCAPE SCHEME POWER STATION ACCESS ROAD JUNCTION						
Scale	1:1,250 @ A1					DO NOT SCALE
Jacobs No.	60PO8077					
Client No.						
Drawing No.	Jacobs Ref.	60PO8077_LVE_DMD_001				
	DCRM Ref.	WN0902-JAC-OS-DRG-00001				
This drawing is not to be used in whole or in part other than for the intended purpose and project as defined on this drawing. Refer to the contract for full terms and conditions						